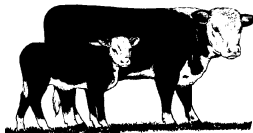
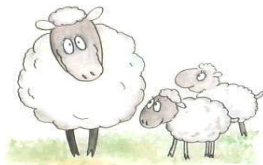




Euroa Grazing Group



Next session Friday the 25th September – tools and decisions for managing the pasture trials, setting stocking rates and spring/summer management issues.

Location: Meet at John Kelly's farm – 198 Heales Road, Euroa. See map. We will be meeting for morning tea in John's shed and heading out to the trial paddock just past the shed at 9:45am.

Time: 9.15am for 9:45am start – 3:00pm finish. We will be spending the afternoon session in the Moglonemby Hall.

Plan:

Please note that the topic for this session has changed due to our marketing speaker from CRF processing not being available. I have organised for Stuart Warner and the CRF rep to be available for early next year. I apologise for any inconvenience caused by this.

9:45am

- Update from John and Andrew on trial plots
- Overview of trial results so far – composition, plant counts, pasture availability and establishment success.
- Discussion of fencing trial into individual paddocks
- Paddock walk – looking at results of deep ripping and spraying toad-rush – also effect of spray on clover. Discussion of sub clover management at this time of year.
- Review of soil tests – making decisions for fertiliser management for 2010 and potential impact of deep ripping.

12:15pm Travel back to hall and lunch

1:15pm

- Using the MLA stocking rate calculator to determine trial stocking rates.
- Measuring kg beef produced/ha – decisions on stock management to achieve these measurements and John and Andrew's results from controls.

2pm

- "Think Tank" – bring your issues for discussion and decision making.

Please let Jane or I know if you cannot attend

Kate Sargeant
Ph. 03 57 354 352
Mob. 0428 325 318
Email: Kate.Sargeant@dpi.vic.gov.au

Jane Davey
Ph. 03 5798 5205
Mob. 0427 985 205
daveyst46@hotmail.com

Coming events

Wednesday 23rd September

Final pasture composition measurements for Tom Hooke's honours project, and first pasture growth measurements. Meet at Andrew's paddock 10am, John's paddock 1pm.

Thursday 8th October – Meet at Euroa Station at 7:15am (other stops in Seymour and Benalla).

Bus trip to Holbrook. Alternative fertiliser trial at Ian Locke's property, followed by the Holbrook EverGraze trial site – getting the most out of hill country natives and phalaris flats. Also see the results of a sub-clover over-sowing trial. **RSVP to Kate Sargeant by 28th September.**

Tuesday 13th October (Creightons Creek, Barrie Noye) and Wednesday 14th October (Strath Creek, Terry Hubbard) 9:30pm-2:30pm.

Managing Steep Hills with Wire Water and Wisdom field days. Come and see the new phalaris pasture established on the hill top at Barrie's property and the steep hill management in action at Terry's. Guest speaker David Tongway will speak about landscape function analysis. RSVP to Ian McLarin – 03 5794 9279.

Thursday 22nd October – EGG Cost of Production and Partial Budget session.

Thursday 12th November – 4:30pm – 8:30pm

EverGraze supporting site field day at Warrenbayne. See the result of native pasture management, native pasture and weed ID session with Peter Mitchell and cost/benefit of pasture establishment with Alison Desmond.

Thursday 19th November – EGG Soil Biology and Worm Juice session with Julian Hills at Brooklands, Ruffy.

Thursday 3rd December – EGG Christmas Party

Review of Cost of Production Session with Jonathon Tocker and what you need to do to get your data in.

Val and Robyn Machin hosted the cost of production session in August. Our numbers were significantly down with several people phoning in sick and others busy in various ways. The group learnt to calculate their cost of production, and agreed to submit the forms to Jonathon for analysis and benchmarking of the group. If you would like to be part of this extremely valuable exercise, please complete the enclosed or attached forms (electronically or on paper) and send them back to me. **The data remains completely anonymous. Please let me know if you need assistance with filling out the forms.** It would be great to have as many in the data set as possible. We are having a feedback session in October to analyse the results, and we hope to continue to monitor from year to year to see the implications of the changes we make.

The day kicked off with a new version of the whiparound which we have nick-named "think-tank". John Kelly presented the question – should we be continuing to run cows and calves with the continuing tough seasons or would we be better off with a trading enterprise? We through up the pros and cons of each side of the argument and were lucky to have Jono in the room who was able to use a

partial budgeting tool to help us to run an economic analysis on the problem. This resulted in the trading enterprise coming out marginally on top, with the main driving forces being lower feed costs and larger numbers of animals able to be run in a trading enterprise. However, the analysis proved significantly sensitive to the price received. The conclusion was that to decrease the risk in our businesses, we should consider running multiple enterprises – a base core of breeding stock we know we can get through in a tough season, with room for buying in good numbers of trading stock when times are good. Overall, the day was a great success despite the lack of numbers.

Update on trial results

Worm Juice Trial:

The second measurements for the worm juice trial were completed and are presented below. Overall, there was no significant difference in the winter growth rate or composition between the worm juice treated areas and the non-treated areas. Frank and Rob plan to put some more worm juice on during October at which time we hope to see a difference!

Pasture Composition

	Treated	Untreated
Rye	44%	38%
Clover	20%	28%
Onion	3%	0%
Silver	14%	16%
Sorrel	8%	5%
Moss	4%	1%
Erodium	9%	10%
Native	0%	3%

August Pasture Growth (kg/ha/day)

	Treated	Untreated
	13	10
	8	13
	18	18
	9	10
Average	12	13

Persistent Perennials Trial

We attempted to do another set of plant counts during August, but found that the plants had become too advanced and difficult to distinguish between them. We therefore decided on composition and ground cover as better measures. The tall fescue seems to be the best performer at Andrew's site, followed by the phalaris, brome and yarck cocksfoot with the uplands bringing up the rear. The slower species seem to be suffering from weed invasion. At John's site, the toadrush was sprayed in August and the last few years of cropping have made for a cleaner pasture. The brome seems to be performing better on this site due to the higher fertility. The extreme differences in establishment rate between species has led us to believe the pastures need to be managed separately so I have found some funding to fence the site. We will discuss this point next Friday at the meeting.

Ground Cover

	Fescue 1	Fescue 2	Yarck 1	Yarck 2	Uplands 1	Uplands 2	Brome 1	Brome 2	Phalaris 1	Phalaris 2
Walta	63%	46%	51%	32%	32%	26%	54%	51%	47%	61%
Kelly	70%	83%	53%	66%	57%	68%	66%	68%	39%	73%



Far left: Clover recovering from spray damage.
Middle: Deep rip line in phalaris.
Right: Kelly tall fescue.

**Pasture Composition
26/8/09 - Walta**

	Sown species	Clover	Annual grasses	Broad leaf	Toad rush	Onion
Fescue 1	56%	27%	5%	8%	3%	2%
Fescue 2	46%	26%	20%	4%	4%	0%
Yarck 1	34%	29%	25%	7%	5%	1%
Yarck 2	31%	36%	29%	2%	3%	1%
Uplands 1	18%	35%	28%	12%	4%	3%
Uplands 2	15%	36%	41%	3%	5%	0%
Brome 1	32%	33%	28%	3%	2%	0%
Brome 2	37%	30%	28%	2%	3%	1%
Phalaris 1	62%	9%	20%	5%	3%	0%
Phalaris 2	49%	31%	17%	2%	1%	0%

**Pasture composition - Kelly
26/8/09**

	Sown Species	Clover	Annual grasses	Broad leaf	Toad rush	other
Fescue 1	68%	28%	2%	2%	1%	0%
Fescue 2	78%	21%	0%	0%	0%	1%
Yarck 1	65%	20%	14%	1%	0%	0%
Yarck 2	68%	18%	13%	1%	0%	0%
Uplands 1	68%	23%	5%	3%	1%	1%
Uplands 2	65%	24%	6%	1%	2%	3%
Brome 1	68%	24%	7%	0%	0%	1%
Brome 2	76%	21%	2%	0%	1%	0%
Phalaris 2	73%	22%	3%	2%	0%	0%

